

Supporting the development of a Belgian One Health vision for zoonotic disease prevention

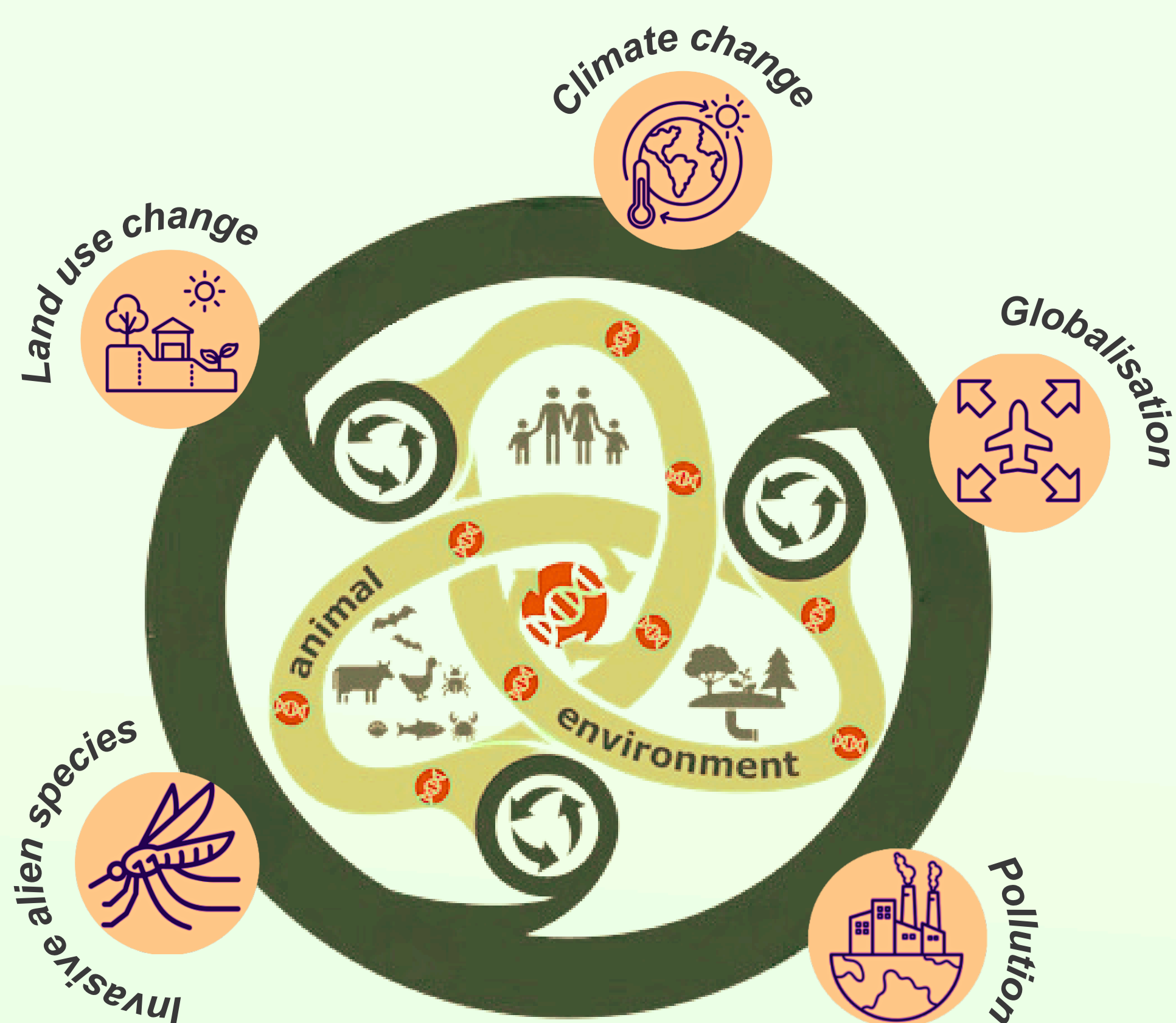
Background

- **PREZODE** (Preventing Zoonotic Disease Emergence) is an **international One Health initiative** that aims to understand the risks of emergence of zoonotic diseases while improving prevention, early detection, and resilience to ensure rapid response to the risks of emerging zoonoses. www.prezode.org
- **Belgium** joined in 2021, establishing the **Belgian PREZODE Expert Group (BEEG)** in 2022, comprising representatives from public authorities, research institutions, academia and NGO's. Belgium is working towards a *One World, One Health strategy to prevent zoonotic disease emergence*.

The project

- **ZooBiodiv project** is a **scientific partnership** between Sciensano and the Federal Public Services (FPS) Health, Food Chain Safety and Environment, from April 2024 to May 2025.
- **Two distinct work packages (WPs)** support the BEEG's efforts to develop a **national One Health strategy** for preventing zoonotic risks, and aim to gain insight into the **Belgian state of play** regarding zoonotic risks in order to inform future integrated, evidence-based policy.

WP1 - Literature review



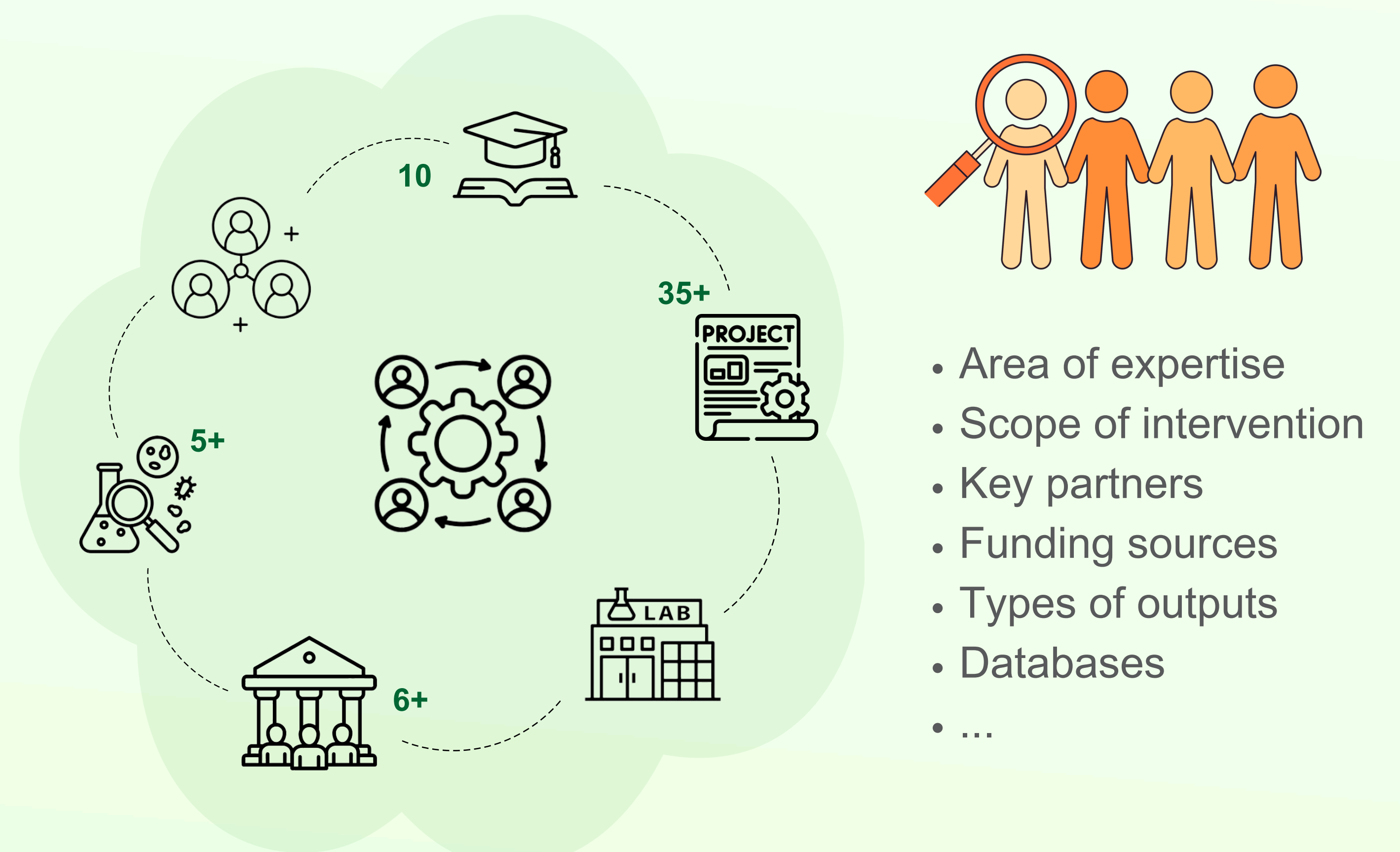
What

Exploring the links between **anthropogenic environmental changes**, including climate change, and the **risk of zoonotic disease emergence** within a Belgian context.

Methodology

- Non-exhaustive literature review, including 400+ peer-reviewed and 'grey' documentation sources.
- Belgian context, including regions with similar climatic and socio-economic conditions.
- Knowledge gaps identification

WP2 - Stakeholder mapping



What

Descriptive mapping of all stakeholders, their associated projects, and existing databases, involved in the prevention and control of zoonotic diseases in **Belgium**.

Methodology

- Online research
- Semi-structured interviews with key informants
- Excel document

Preliminary conclusions

- Numerous data gaps and insufficient research at Belgian level.
 - Lack of long-term, uninterrupted and harmonized data collection.
 - Numerous stakeholders across Belgium's distinctive and fragmented state structure and competencies.
- ➔ Opportunities for improved research collaboration and networking

