

EMPOWERING BIODIVERSITY RESEARCH





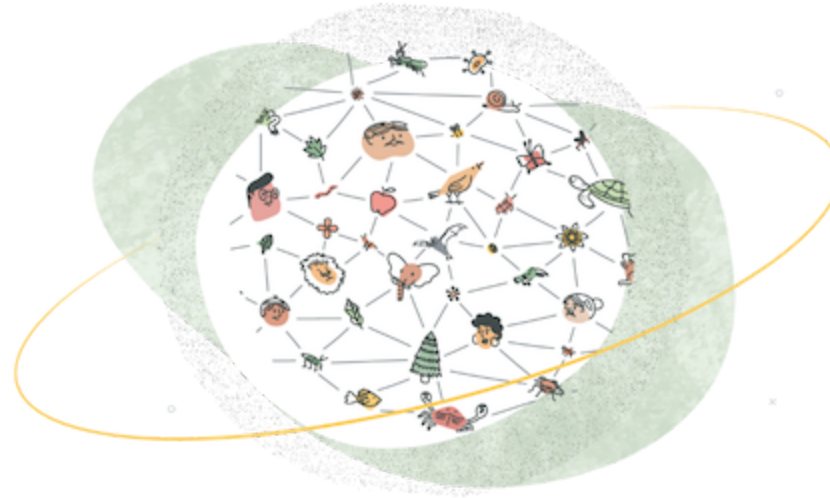
Large Projects - looking forward
André Heughebaert, BBPf, 24-25 May 2022



SUMMARY

- Where are we now?
 - About GBIF
 - About Belgium
- Challenges ahead
- Forward looking
 - Global
 - Local

Together4Forests
Carlos Alberto GH
© WWF/ SAM



2,167,543,437

Occurrence records



69,263

Datasets

GBIF.org, assessed on 16 May 2022



1,831

Publishing institutions



7,196

Peer-reviewed papers
using data

ABOUT GBIF

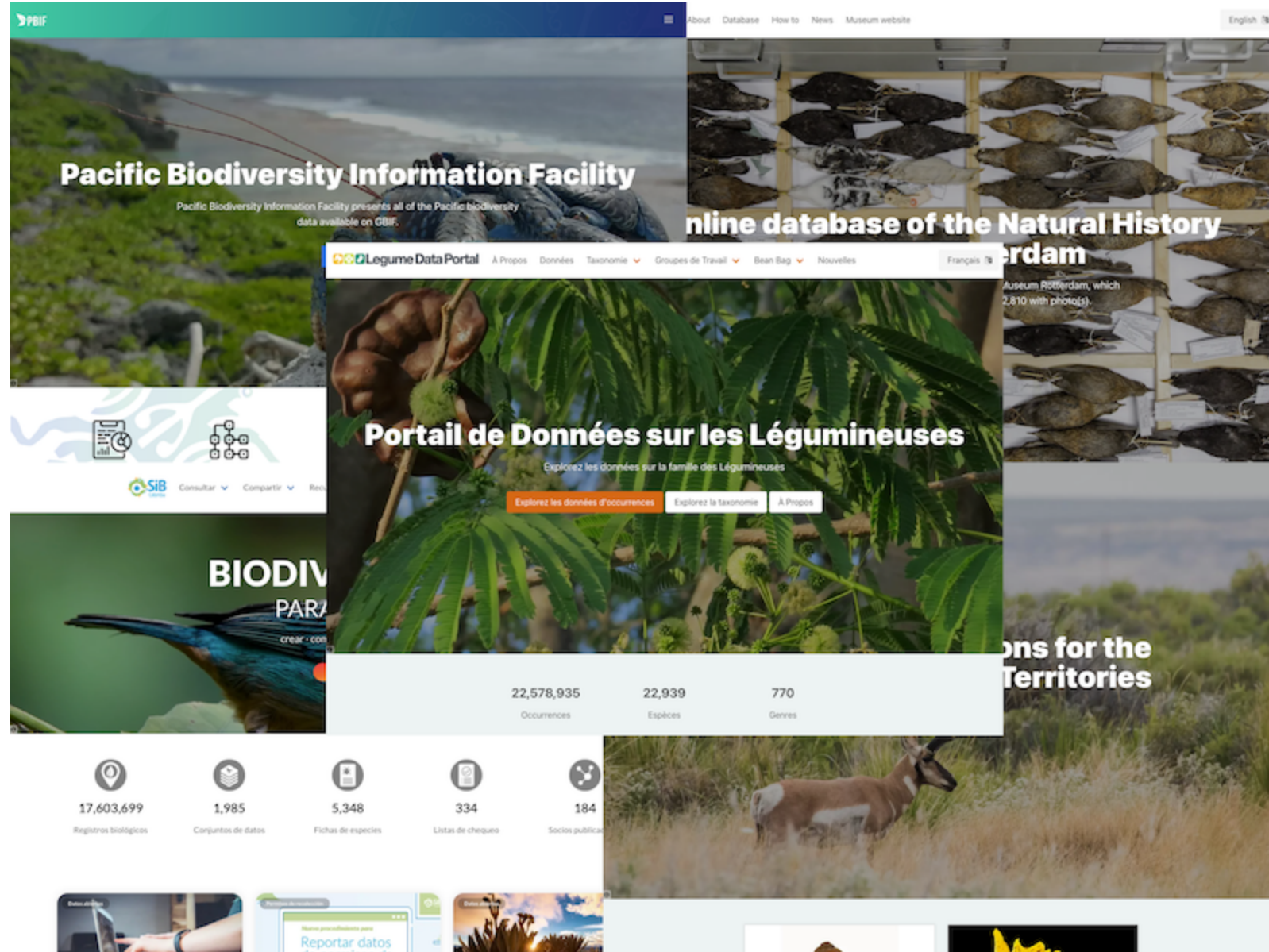
*Infrastructure distributed amongst
the **Secretariat**, the **Regions** and the **Nodes**.*

*[GBIF.org](https://gbif.org) website + webservices
Integrated Publishing Toolkit
DarwinCore & ABCD standards*

*Community of people
Governance (voting participants)
Partnership*



HOSTED PORTALS



Together4Forests
Carlos Alberto GH
© WWF/ SAM

STRATEGIC FRAMEWORK 2023-2027

GBIF vision, mission and values

STRATEGIC PRIORITY AREAS

1. Building the evidence to advance scientific research and understanding of global biodiversity
2. Supporting policy responses and knowledge transfer that address urgent societal challenges around planetary change
3. Enabling the network to meet future needs and challenges
4. Driving innovation to advance biodiversity-related knowledge

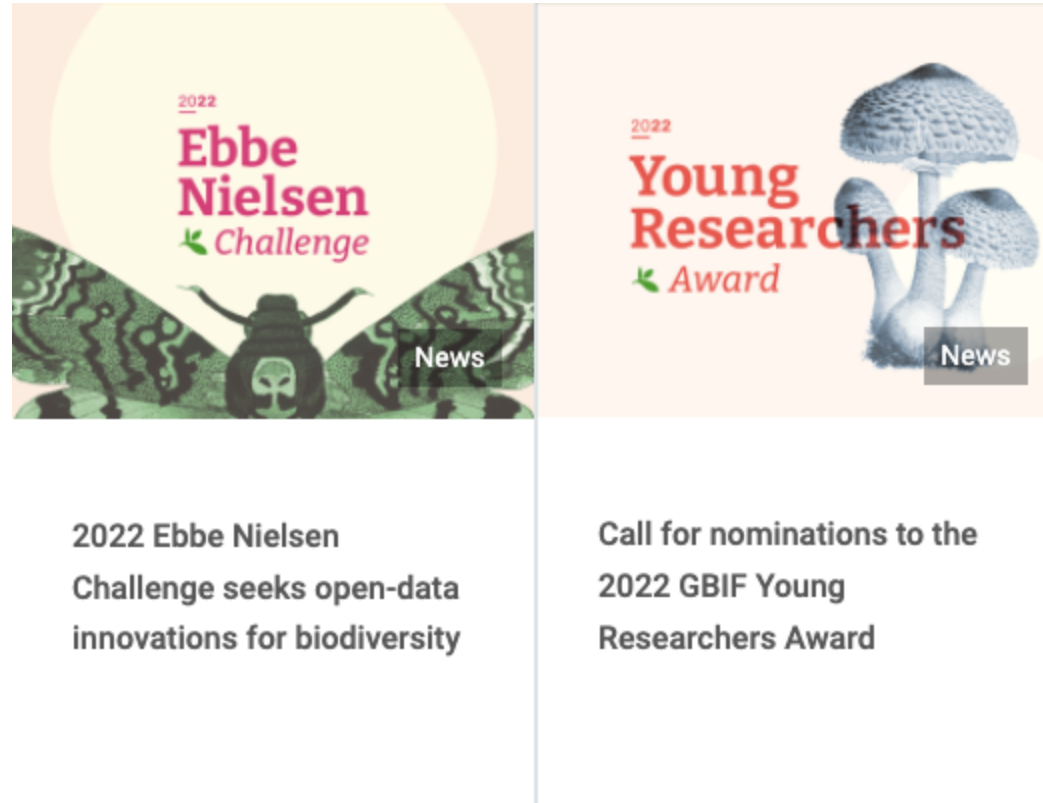


DATA PUBLICATION GUIDELINES

*Best Practices in Publishing **Species Checklists***
*Best Practices in Publishing **Sampling-event** data*
Best Practices in Publishing Occurrence data
GBIF Metadata Profile – How-to Guide
*Best Practices for **Generalizing Sensitive Species***
Occurrence Data
Georeferencing Best Practices

Integrated Publishing Toolkit(IPT) User Manual
***Data Validator** and many other tools*

GBIF OPEN CALLS

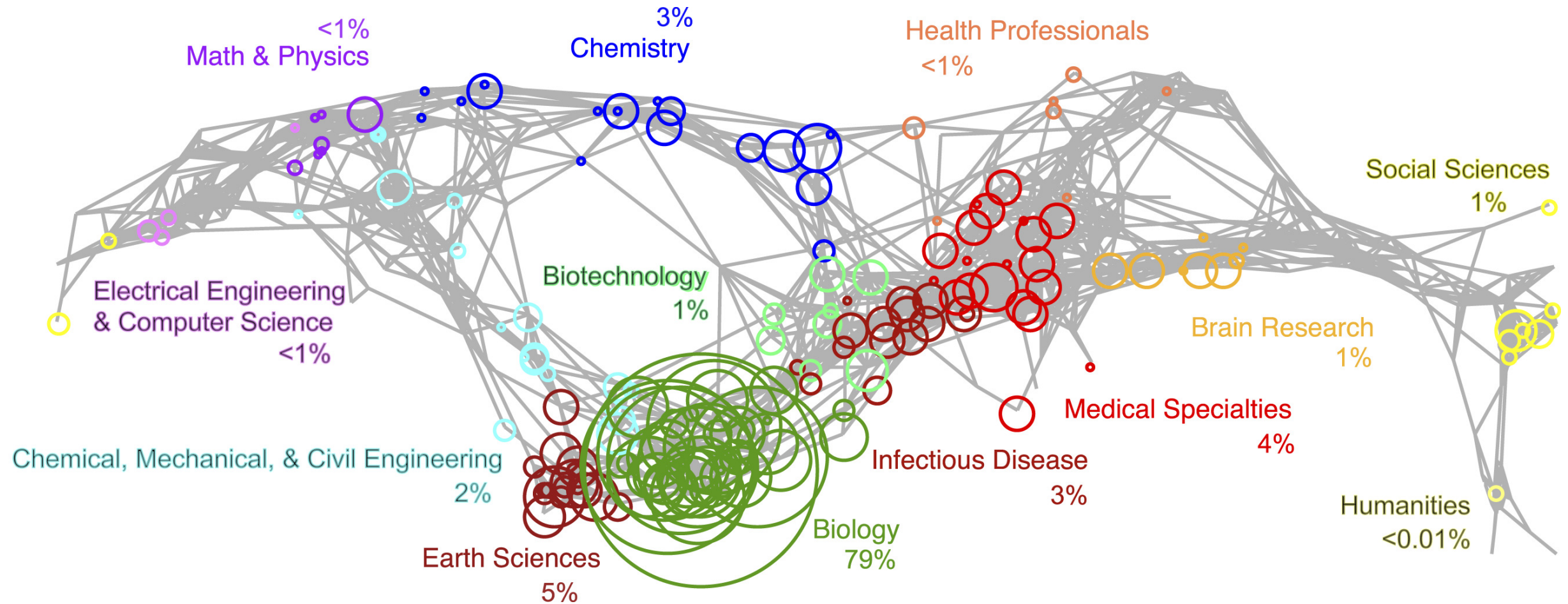


Don't miss the deadlines...

- 14 August 2022 - [Ebbe Nielsen Challenge](#)
- 20 June 2022 - [Young Researchers Award](#)



DATA INTEGRATION ENABLES GLOBAL BIODIVERSITY SYNTHESIS.



Heberling JM, Miller JT, Noesgaard D, Weingart SB and Schigel D (2021) Data integration enables global biodiversity synthesis. *Proceedings of the National Academy of Sciences*. *Proceedings of the National Academy of Sciences* 118(6): e2018093118.

Available at: <https://doi.org/10.1073/pnas.2018093118>.



Belgium



A GBIF Voting participant from Europe and Central Asia
Names of countries and areas are based on the [ISO 3166-1 standard](#)

[DATA PUBLISHING](#)

[PARTICIPATION](#)

[ALIEN SPECIES⁰⁹](#)

[MORE...](#)

Member status: Voting

GBIF participant since: 2001

GBIF region: Europe and Central Asia

Head of delegation: [André Heughebaert](#)

Node name: [Belgian Biodiversity Platform](#)

Node established: 2001

Website: <http://www.biodiversity.be>

Participant node manager: [Dimitri Brosens](#)



NEWSLETTER SIGNUP



43,518,929

Occurrence records



422

Datasets



23

Publishing institutions



570

Peer-reviewed papers
using data

GBIF.org, assessed on 16 May 2022



BELGIAN BIODIVERSITY PLATFORM

- Belgian node is active since 2001
- publishing **checklists** and **samples** since 2015
- DNA-derived data project with 4 other nodes
- partner in **TrIAS** and **RiparIAS** projects
- **GRSciColl** cleanup and maintenance
- Publishing data to **Catalogue of Life**
- Dedicated portals eg [Lepidoptera of Belgium](#)

CHALLENGES AHEAD

Non-Linnean names



DwC-A star schema limitations



Easier publishing process



No more **birds**, please!

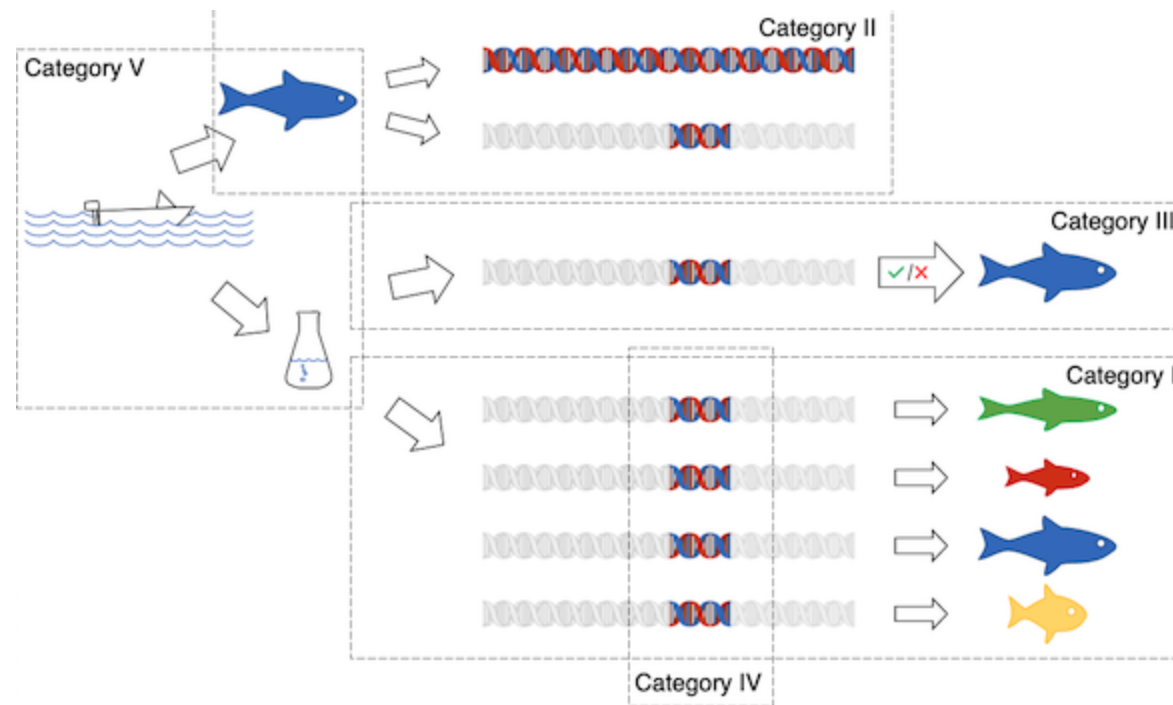


Redefine participation



BEYOND LINNEAN NAMES

Publishing DNA-derived data



DIVERSIFYING THE DATA MODEL

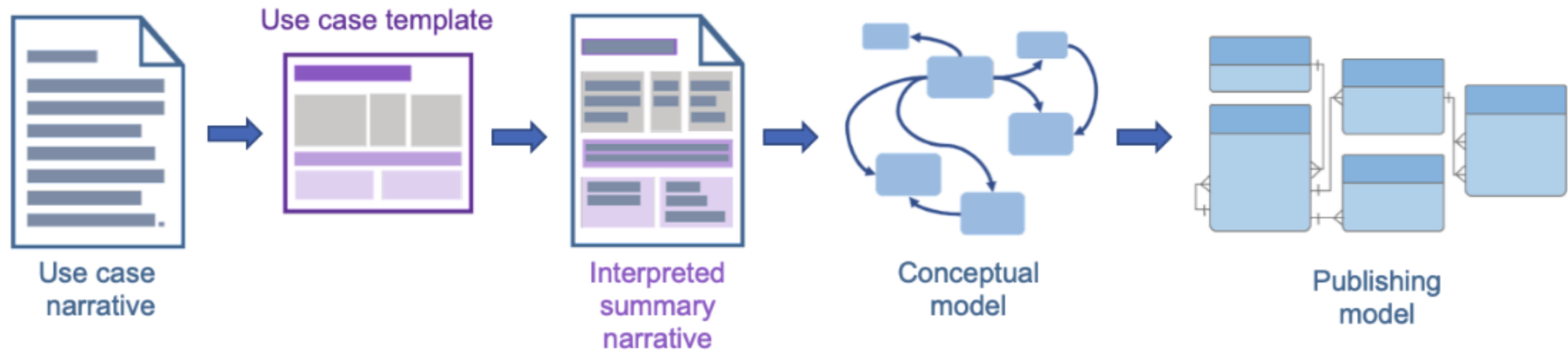


Community webinar on 12 April 2022
by John Wieczorek and Tim Robertson.



THE PROCESS

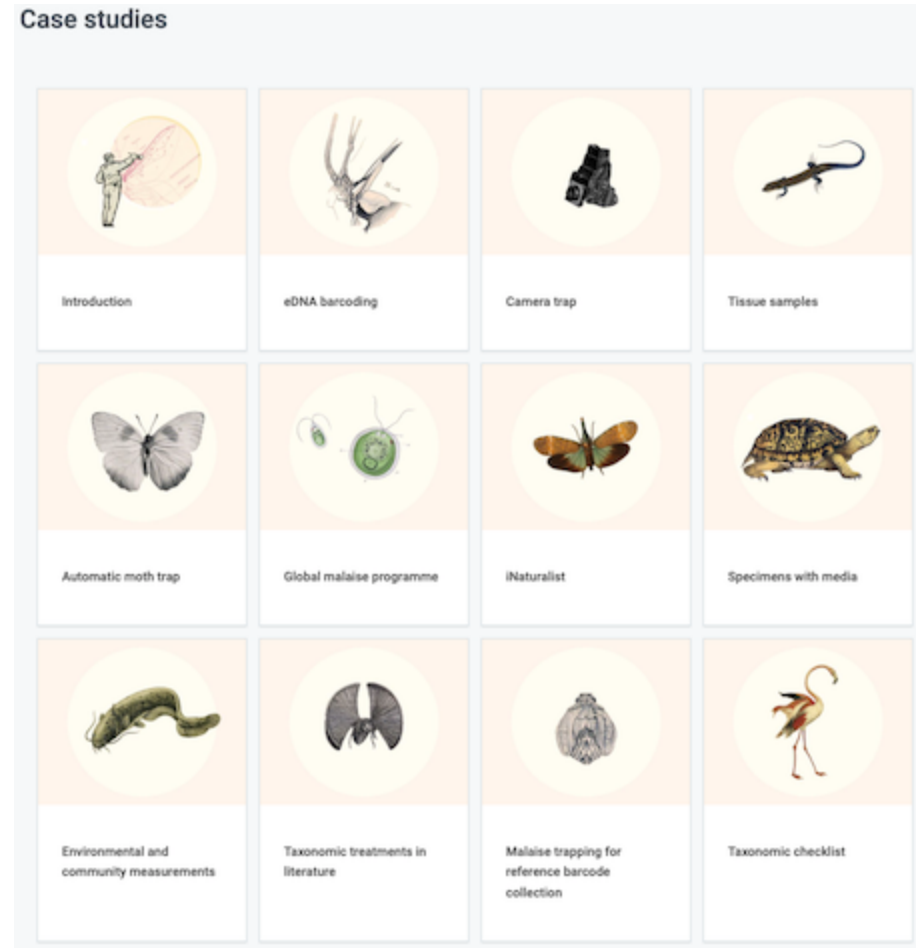
Diversifying the data model



From use cases to conceptual and publishing models

USE CASES

Diversifying the data model

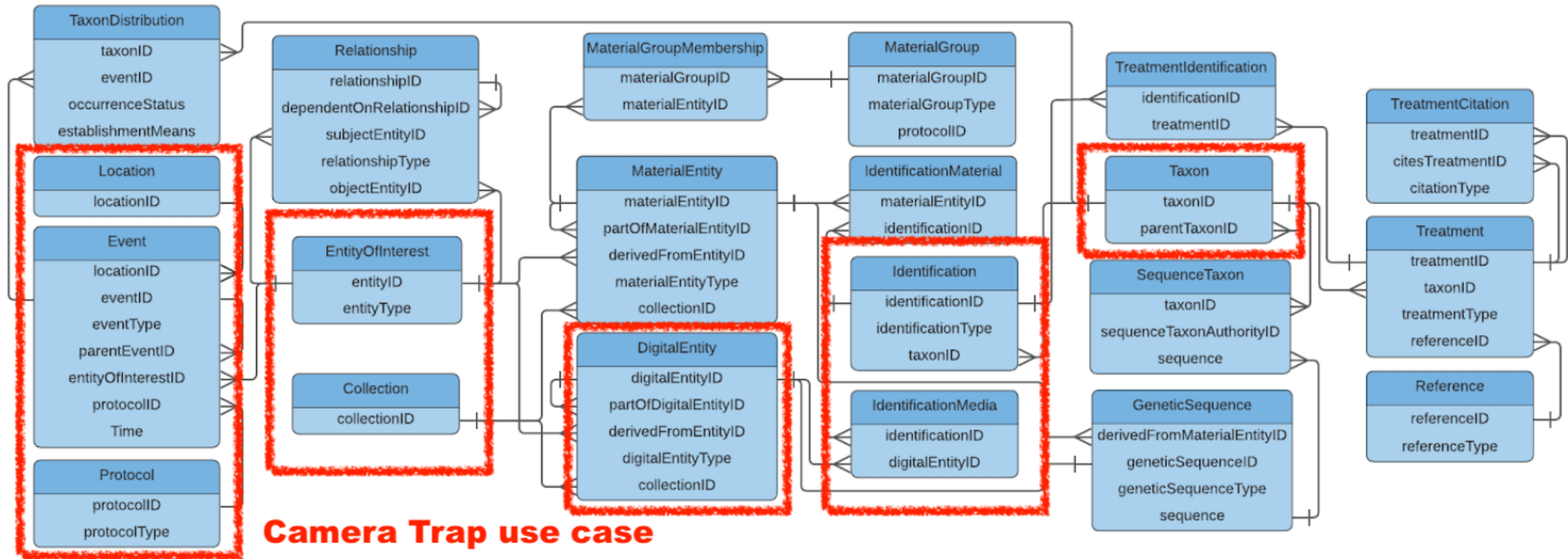


Use Case narrative for eDNA barcoding, camera trap, tissue samples, iNaturalist, specimens with medias...



CONCEPTUAL ENTITIES

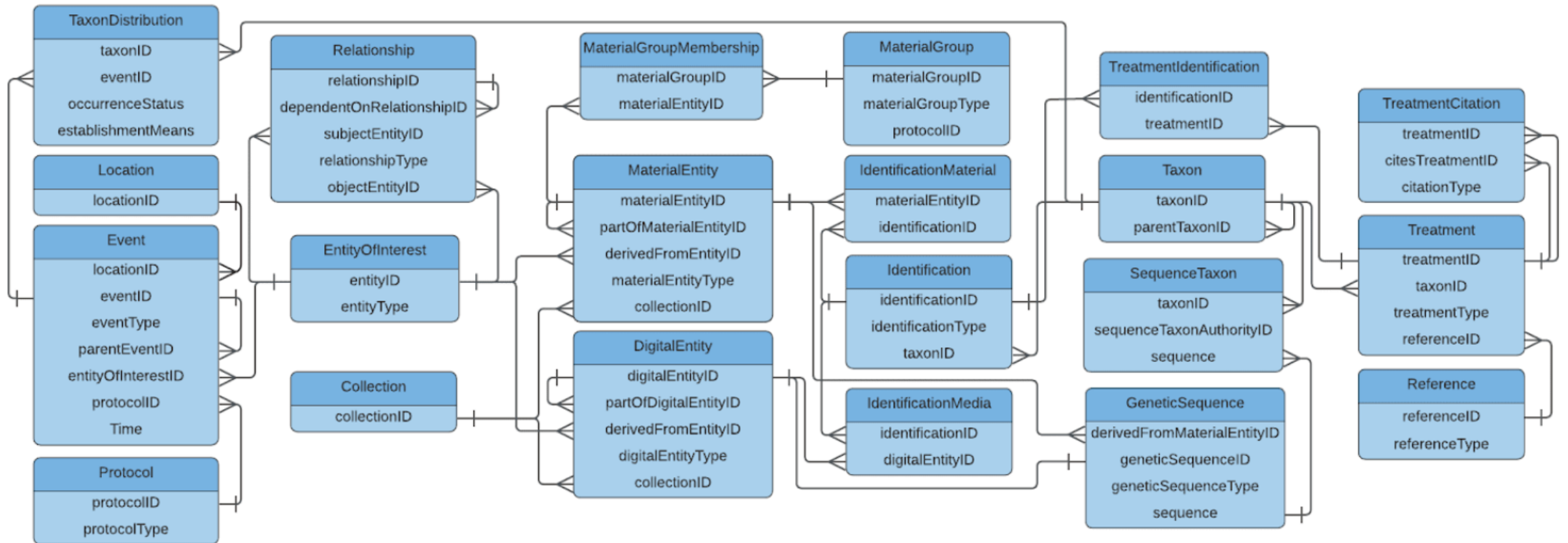
Diversifying the data model



Identifying conceptual entities from various use cases

GRAND UNIFIED MODEL

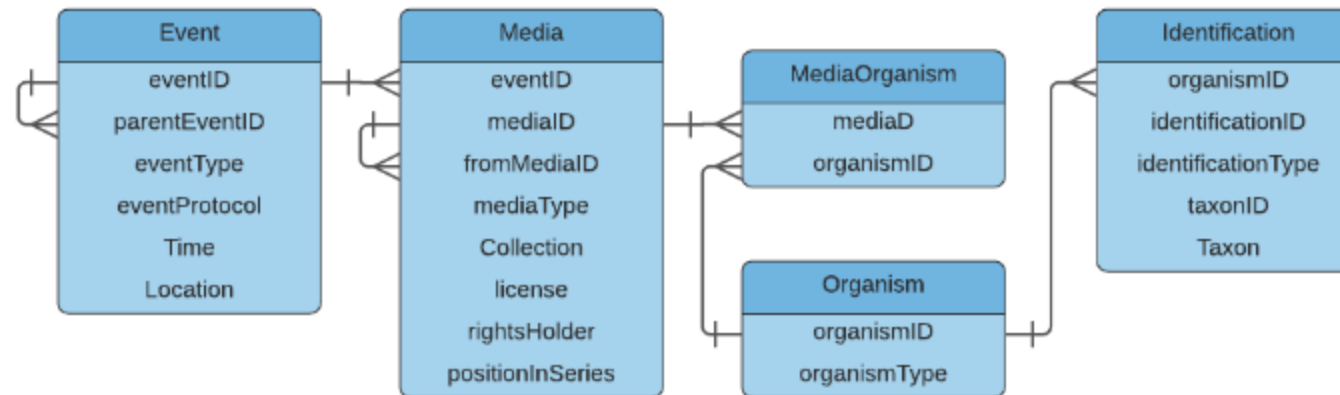
Diversifying the data model



Building a Common Unified Model

SIMPLIFIED CONCEPTUAL MODELS

Diversifying the data model



e.g. publishing Events associated with detecting and identifying organisms from media

DATA PACKAGING

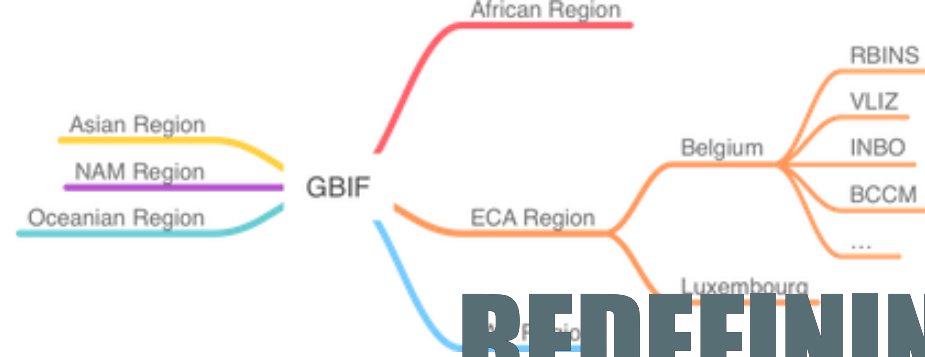
Diversifying the data model

Toward a modern data packaging, such as [Tabular data](#),
to overcome the star schema limitations



**FRICTIONLESS
STANDARDS**





REDEFINING PARTICIPATION

Institutional view

Regions, Nodes, BIFs, Publishers

Standing Committees, Strategic plan, work programmes

Memorandum of Understanding, MoC, endorsement

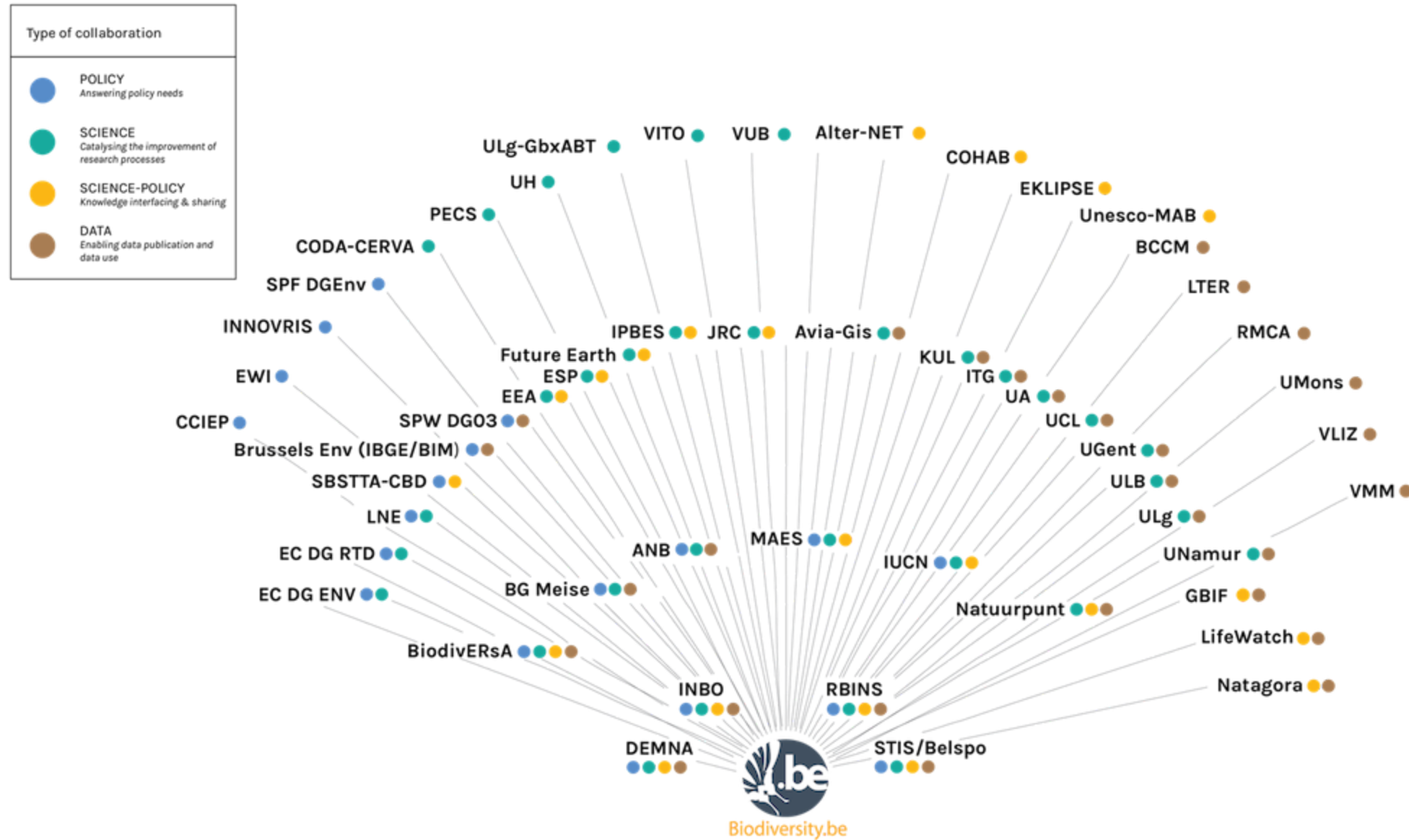
Community of people

Individuals working remotely, often part time

workgroups, Git teams

employees and **volunteers**

The Belgian Biodiversity Information Facility



ALLIANCE FOR BIODIVERSITY KNOWLEDGE



Consultation on primary biodiversity data and the Post-2020 Global Biodiversity Framework

Online consultation and webinar, Thursday 21 July 2022

"With the help of key partners across the science-policy interface, the consultation will engage those involved in developing global and national indicators under the CBD's post-2020 Global Biodiversity Framework (GBF) and Essential Biodiversity Variables (EBVs)."





TAKE HOME MESSAGE

- the future looks bright
- GBIF is reinventing itself
- a vibrant **global community** with **local/remote skills**
- Embrace the coming changes with your node
- Get involved in the process (if not already)
- Build bridges between:
 - Departments, Institutions, Partners
 - Disciplines and Technologies

THANK YOU!

✉ [@andrejjh](#) on twitter



and thanks to **Carlos Alberto GH** Mexican street art painter,
WWF & Street Art for Mankind [Together4Forests](#) campaign



Together4Forests
Carlos Alberto GH
© WWF/ SAM