



Introduction to EKLIPSE

www.eclipse-mechanism.eu

Jorge L. Ventocilla (RBINS, EKLIPSE Secretariat)



EKLIPSE aims to bring together scientists, policy-makers & other societal actors, to ensure that decisions affecting biodiversity are made with the best available knowledge.



EKLIPSE helps to:

- Facilitate SPI (creation and uptake)
- Answer questions affecting biodiversity and ecosystems
- Facilitate evidence-based decisions

EKLIPSE is a **responsive mechanism**: Instead of trying to predict or make assumptions on what policy & society actors will be interested in, EKLIPSE responds to demands from **policy makers** and **societal actors**.



HORIZON SCANNING



KNOWLEDGE SYNTHESIS



SOCIETAL ENGAGEMENT

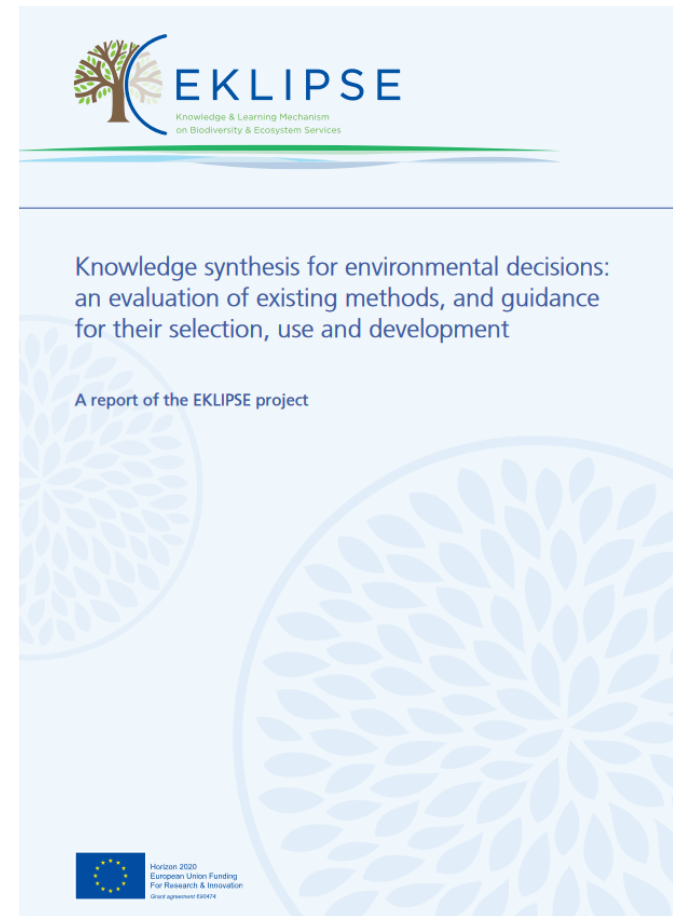


SUPPORT INITIATIVES

How?

- Demand driven: requests from societal actors
- Database of knowledge synthesis methods
- Uses knowledge from science, practice & society
- Builds on an ethical infrastructure, and on a Network of Networks

EKLIPSE has **open calls** (for requests/for knowledge), so that policy-makers and societal actors can tell us what they need, and can discuss with us how we can best meet their needs









EKLIPSE for Policy makers: Make better informed decisions based on the best available knowledge, though alliances with scientists and other stakeholders

Eclipse for Scientists: Interact, share your knowledge and discuss emerging issues with policy makers and other stakeholders. *Your knowledge can make the difference!*

Eclipse for Citizens: Discuss key environmental issues that matter to you, and create links with scientists and policy makers



- Examples from past and ongoing calls

Topic/Description of Call	Requester
How can environmental regulators support businesses to improve the outcomes of their operations for biodiversity, with a focus on small and medium-sized enterprises in the food and beverage sector in Europe?	
Which types and components of urban and peri-urban blue / green spaces have a significant impact on human mental health and mental well-being?	 World Health Organization
What measures are most promising to deliver on supporting biodiversity and ecosystem services in the next round of the Common Agricultural Policy (CAP)?	  Swedish Board of Agriculture
Nature-based Solutions to Promote Climate Resilience in Urban Areas - developing an impact evaluation framework	 European Commission
What are the impacts of artificial electromagnetic radiation on wildlife? What are the evidence gaps that are the highest priority to address? What policy solutions should be considered?	

Topic/Description of Call	Requester
How are European energy policies affecting biodiversity and ecosystem services in countries globally?	
How can we better integrate research and knowledge on biodiversity and ecosystem services from the global to the European level, and vice versa?	
Is missing knowledge hampering the effectiveness of approaches that aim to restore biodiversity and ecosystem service function and services?	
What kind of, and how to cultivate hedgerows most beneficial to indigenous pollinator populations?	
How can biodiversity policy trigger Transformative Change and how this can be translated into actions, goals, targets and pathways for the Global Biodiversity Strategy to 2030?	

BUT... there is more!

EKLIPSE produces:

- **Thematic Reports, and,**
- **Knowledge Syntheses**

But EKLIPSE is also:

- **Workshops:** EKLIPSE, EPBRS and BiodivERsA jointly organized in December 2016 a participatory foresight workshop in Brussels to discuss **research needs to face future societal challenges and emerging issues;**
- **Citizen's science:** In Helsinki, Budapest and online





Knowledge & Learning Mechanism
on Biodiversity & Ecosystem Services

The Future

- **Evidence-informed decision-making:** The objective of the EKLIPSE is a long-term goal, not limited to the life of the project
- **Lightweight and self-sustaining mechanism**
- From Dec. 2020 **EKLIPSE will be hosted by ALTER-Net**, a network of natural and social science researchers from 18 European countries working to integrate our understanding of biodiversity, ecosystems, and the services they provide to society and to create a platform for meaningful communication with policy-makers and the public.



Would you like to learn more? Visit us at www.eklipse-mechanism.eu



Knowledge & Learning Mechanism
on Biodiversity & Ecosystem Services

Developing
a mechanism for
supporting better
decisions on our
environment based
on the best available
knowledge.

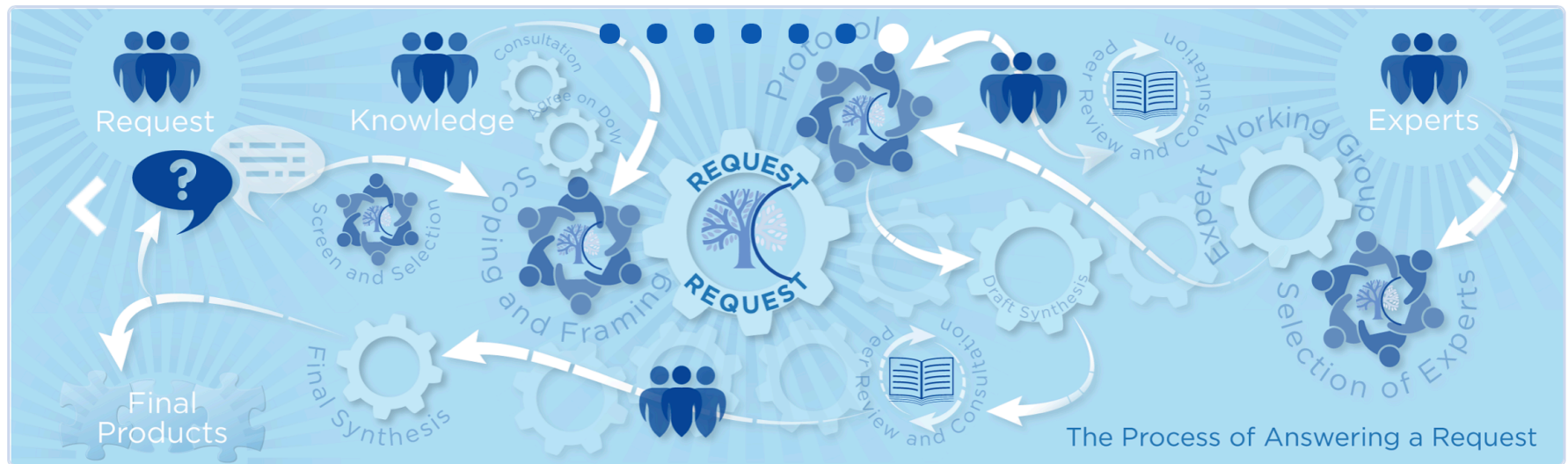
CALLS

REQUESTS &
ACTIVITIES

EKLIPSE
COMMUNITY

OUTPUTS

MAKING A
DIFFERENCE



Proudly partnered with ALTER-Net



Knowledge & Learning Mechanism
on Biodiversity & Ecosystem Services

Thank you!



Questions?