


Biodiversity and biodiversity governance in Belgium



Hendrik Segers

CBD-National Focal Point Belgium, Royal Belgian Institute of Natural Sciences





“This presentation will shed light on main drivers of biodiversity loss in Belgium, and about the way biodiversity policy is developed and implemented in Belgium

(competences, consultation bodies, links to the Aichi targets, SDGs, post-2020...)”

all this in 15 minutes...

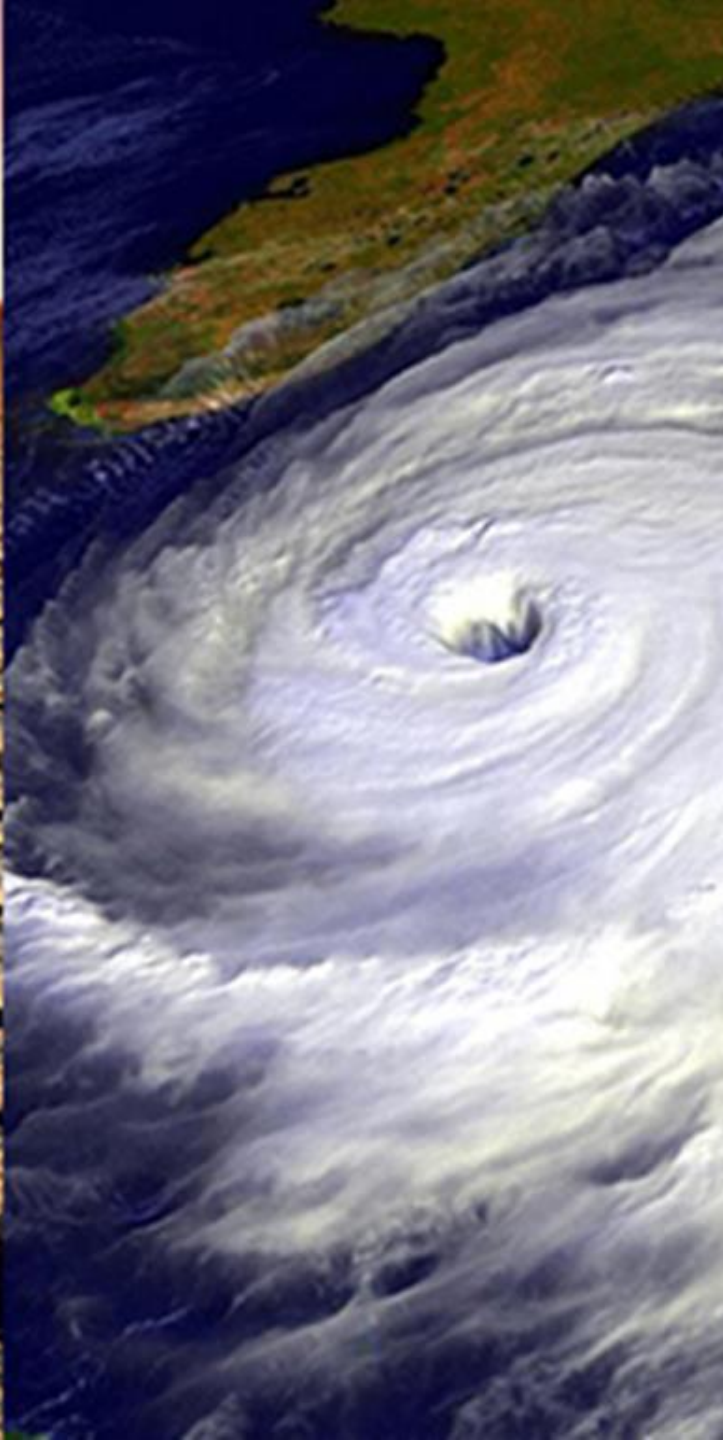
I. Main drivers of biodiversity loss in Belgium

Direct and Indirect drivers of biodiversity loss















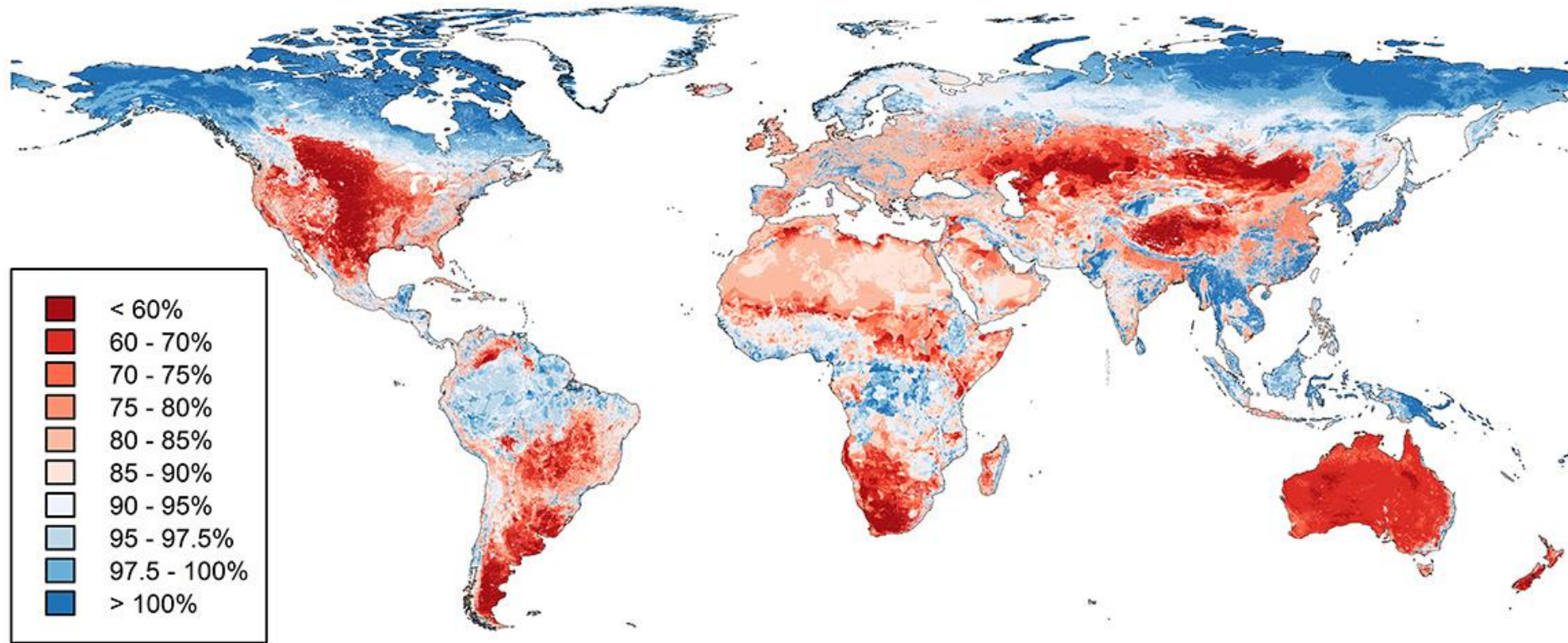


Indirect drivers: the root causes of change

Demographic change + Economic activity
+ Globalisation + Consumption patterns

Cultural and religious factors (incl education)
+ Scientific and technological change

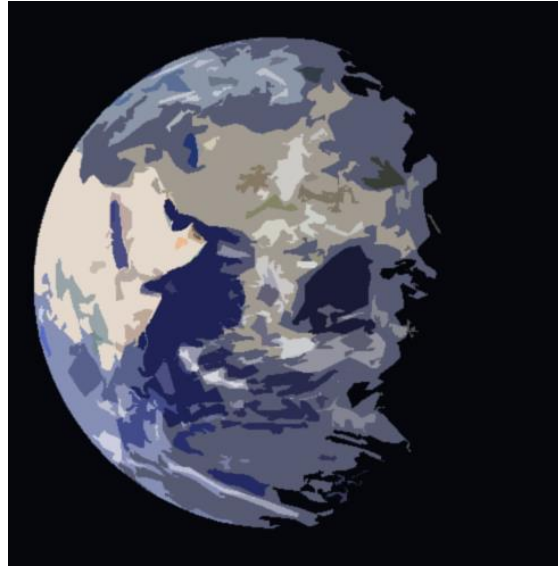
Biodiversity under pressure



Loss of biodiversity is a world-wide phenomenon, but is not homogeneous. This map depicts the remaining populations of indigenous species as a percentage of the original populations.

Source: Science 2016: 353(6296): 288-291

Think global
Act local



II. In a perfect world...

Biodiversity and Sustainable development goals are intertwined



7 biodiversity-related UN conventions



The Strategic Plan 2020 and the Aichi targets



Understand values



Mainstream biodiversity



Address incentives



Sustainable production



Halve rate of loss



Sustainable fisheries



Manage within limits



Reduce pollution



Reduce invasive spp.



Minimize reef loss



Protected areas



Prevent extinctions



Conserve gene pool



Restore ecosystems



Enhance resilience



Implement Nagoya Prot.



Revise NBSAPs



Respect and conserve TK



Improve knowledge

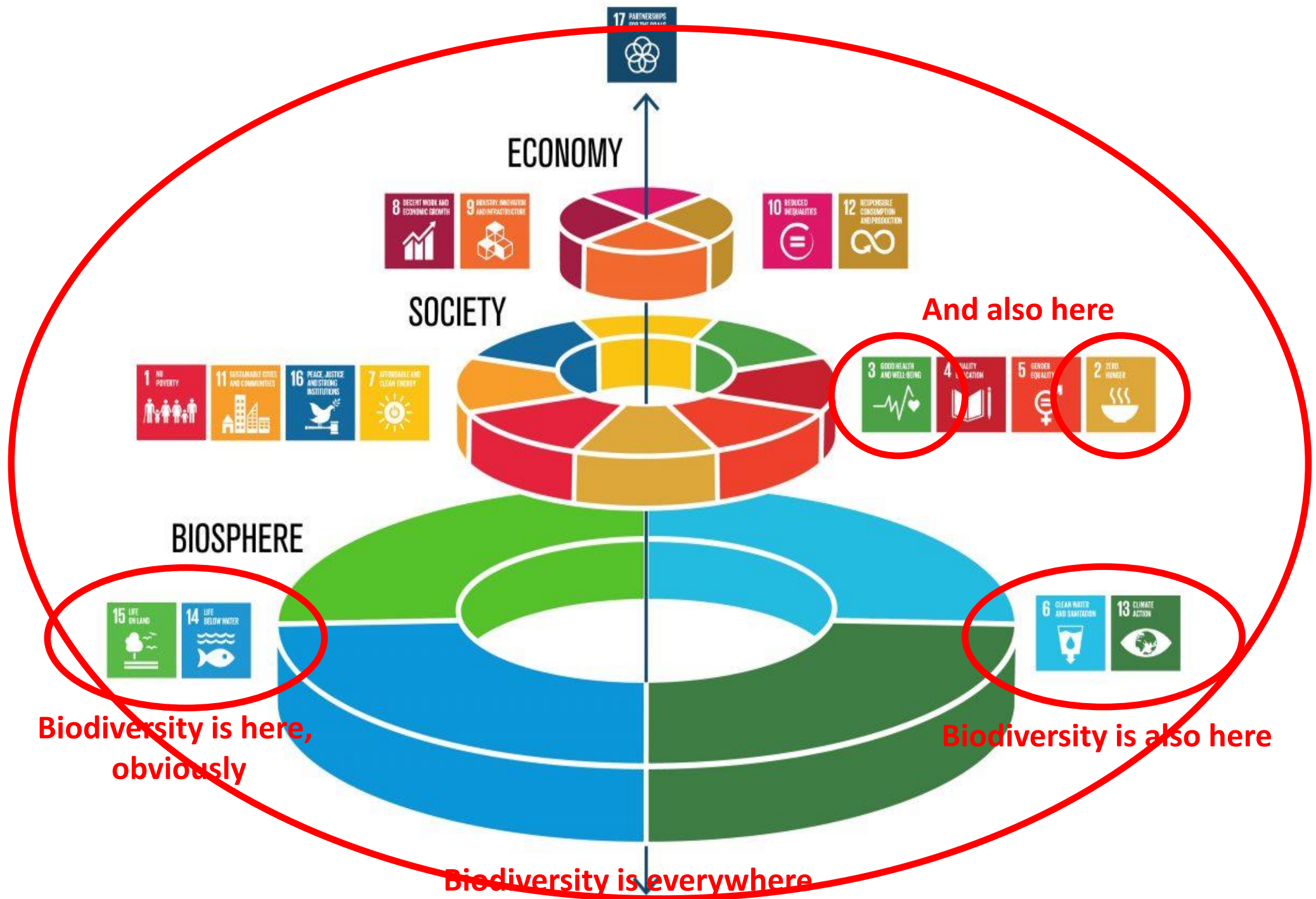


Mobilize resources

2030 agenda



On September 25th 2015, countries adopted a set of goals to **end poverty**, **protect the planet**, and **ensure prosperity for all** as part of a new sustainable development agenda. Each goal has specific targets to be achieved over the next 15 years.



2050 Vision for Biodiversity

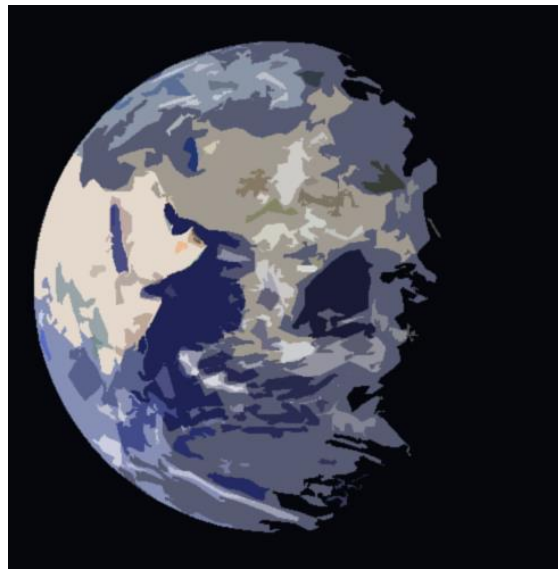


By

2050

**biodiversity is valued, conserved and restored and wisely used,
maintaining ecosystem services, sustaining a healthy planet
and delivering benefits essential for all people**

Think global
Act local



III. Addressing biodiversity loss ... in in Belgium

Belgium is a federal state and a member state of the EU



Decision making in Belgium

- Higher level
 - Federal state
 - Communities (3)
 - Regions (3)
- Middle level
 - Provinces (10)
- Lower level
 - Municipalities (589)

BELGIUM



THE COMMUNITIES



THE REGIONS



Who does what: distribution of competences

- **Federal level:**
 - **Areas of federal competence:** North Sea, most aspects of development cooperation, some aspects of research;
 - **External dimension:** obligations toward the EU and NATO
- **Regions: competences related to the region or territory:** e.g., the environment, agriculture, rural development and nature conservation,...
- **Communities: cultural and education,** research, public awareness, ...



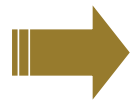
Implementation of biodiversity agreements within Belgium is nearly entirely of regional competence

Who does what: distribution of competences

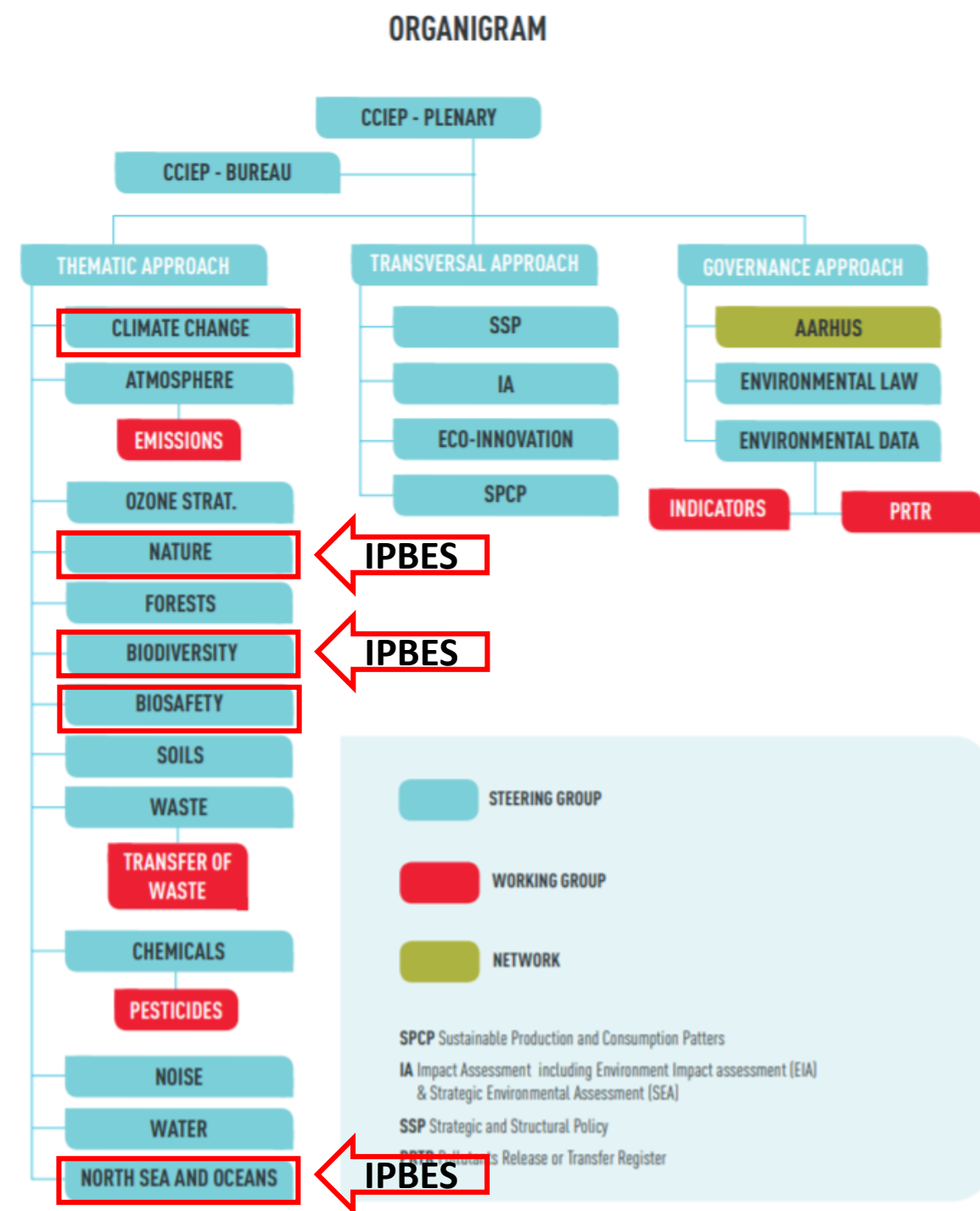
- **Federal level:**
 - **Ministry of Foreign Affairs** : Follow-up of political aspects, development cooperation
 - **Ministry of Environment** : Product policy, labelling, North Sea, CITES, climate change, international aspects, etc.
 - **Federal Science Policy Office**: Scientific aspects of the implementation of international conventions

Addressing biodiversity loss ...

- Coordinating Committee for International Environment Policy (CCIEP)



Belgian coordinating structure for biodiversity policy



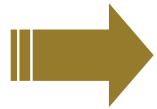
Who does what: distribution of competences

- **EU** (*exclusive or mixed*)
 - Common Fisheries Policy
 - Common Agriculture Policy (CAP)
 - Environment directives (WFD, bird directive, habitats directive; and Natura2000 network) and regulations (ABS, IAS)

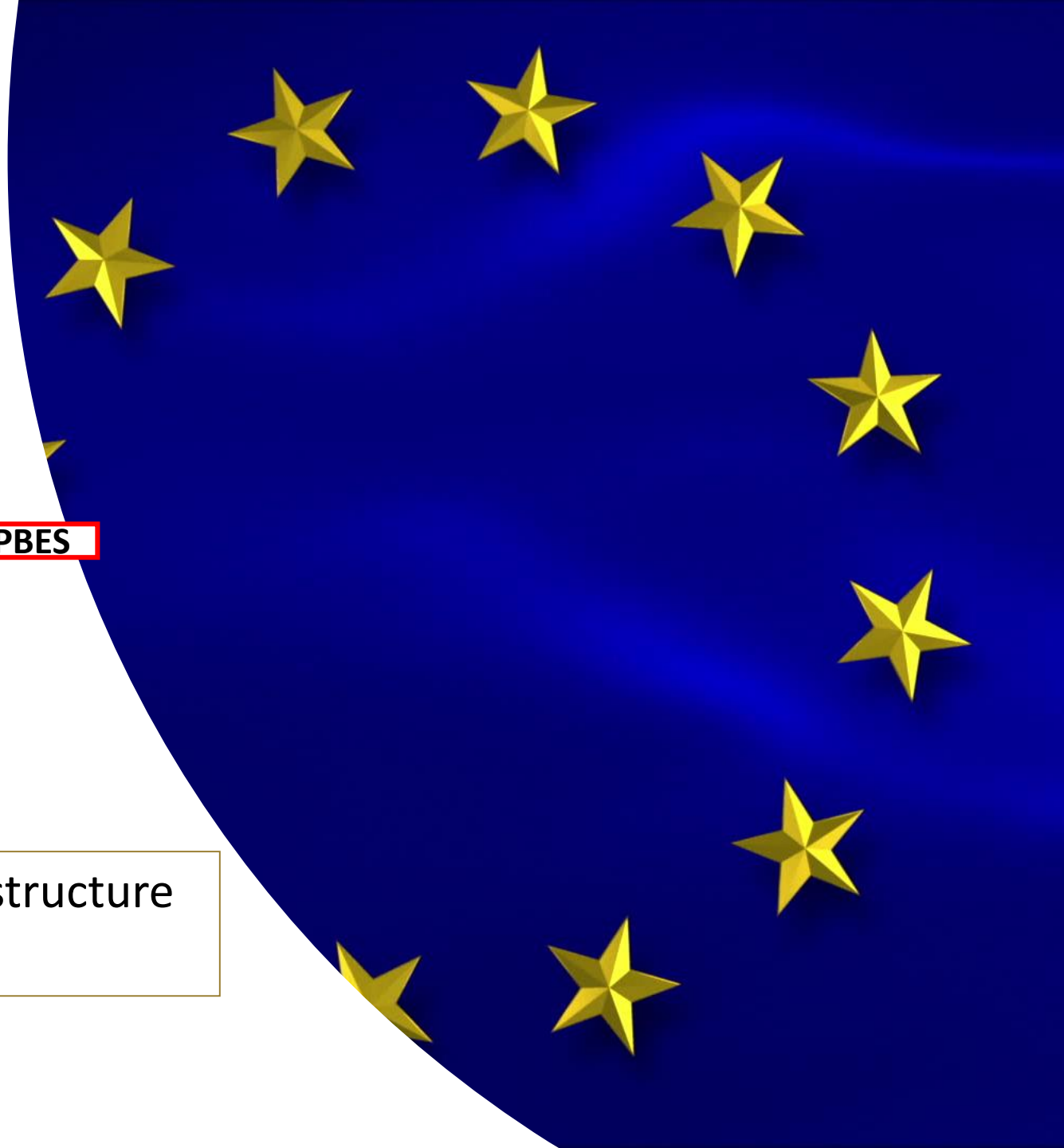


Addressing biodiversity loss ...

- Working Party on Environment (WPE)
- WP on International Environmental Issues - Biodiversity (WPIEI) ← IPBES
- WP on International Environmental Issues - Biosafety



European Union coordinating structure
for biodiversity policy



I may have skipped a few details ...

... any questions?

