

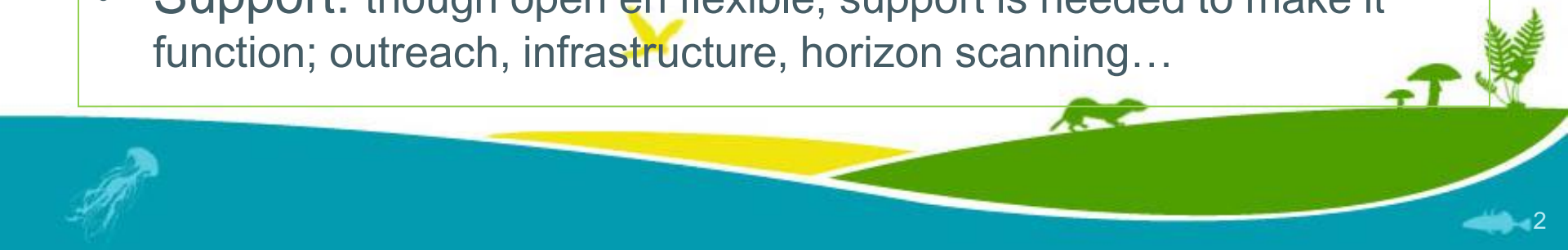
Community of Practice (CoP) Ecosystem Services Belgium

Hans Keune & Dimitri Brosens & Hendrik Segers
Round Table 26-04-2012



Community of Practice (CoP): some general characteristics

- **Joint interest:** eco system services and related issues
- **Network:** stimulate capacity building & exchange of knowledge, experiences...
- **Interface:** overcoming boundaries (science - policy - society, interdisciplinary, policy fields, ...)
- **Open:** diversity of participants, science, policy, stakeholders; via via, outreach
- **Flexible:** informal and self organizing; approach and topics based on participant's interests and demand (e.g. policy demand), international developments, reviews, ...
- **Support:** though open en flexible, support is needed to make it function; outreach, infrastructure, horizon scanning...



Four pillars

- 1: Contact point for Belgian ecosystem services experts
- 2: Development of mainstreaming/policy tools
- 3: Capacity building, exchange of expertise and experience
- 4: State of the art review tools and expert databank



1: Contact point for Belgian ecosystem services experts

- International initiatives:
 - Intergovernmental Platform on Biodiversity and Ecosystem Services (IPBES)
 - EU Working Group on Mapping and Assessment of Ecosystems and their Services (MAES)
 - The Economics of Ecosystems and Biodiversity (TEEB)
 - Ecosystem Services Partnership (ESP)
- Belgian initiatives:
 - Science, policy, society



2: Development of mainstreaming/policy tools

- Main conclusion BElgium Ecosystem Services (BEES) cluster project:
 - The need for uptake of ecosystem services concepts in policy and society
 - Development of tailored tools
 - International momentum
- BEES conference 27-04-2012
- BEES-follow-up - CoP



3: Capacity building, exchange of expertise and experience

- Science, policy, stakeholders
- Collaboration with other CoPs:
 - Belgium:
 - TEEB-like initiatives
 - CoP Biodiversity – Public Health
 - Other topical fields; networks
 - International:
 - Collaboration with the Dutch CoP
 - CoP - Ecosystem Services Partnership (ESP)
 - Other international contacts



4: State of the art review tools and expert databank

- BioBel Expert databank
 - Ecosystem services Expert list
 - Available on line (www.biobel.biodiversity.be)
 - Dedicated version to come (<http://home.bebif.be/biobelcristal>)
 - Updated on request
 - Review tools
 - Possible to keep track on what is happening in Belgium in the “ecosystems services” field
 - Publications
 - Projects
 - Experts



Secretariat/coordination CoP: Belgian Biodiversity Platform?

- Structural networking capacity
 - Website, ICT, BioBel, communication, ...
 - Belgian & international contacts/networks
- Science – policy interface
 - Longstanding experience
- Interdisciplinary team
 - Natural & social science - knowledge, communication, stakeholder participation, horizon scanning



Round table discussion

- CoP functions?
 - 1: Contact point Belgian ecosystem services experts?
 - 2: Development mainstreaming/policy tools?
 - 3: Capacity building, exchange of expertise and experience?
 - 4: State of the art review tools and expert databank?
 - Other?
- Secretariat: Belgian Biodiversity Platform?
- Next steps?



Thank you !!

